

**17W  
4050**

**Mitsubishi L200 DC/CC, Md. 2015+2020**

**Fiat Fullback DC/CC, Md. 2016**

Side protection bar 76 mm

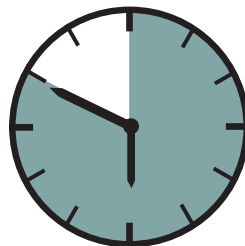
Flankenschutzrohr 76 mm

Protection latérale rondes (76 mm)



## **ASSEMBLY INSTRUCTION**

Montageanleitung • Instructions de montage



**50 Minuten**

**Artikel-Nr:**

17W4050 stainless steel

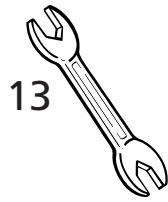
17W5050 black steel

**Revision 5: 15.10.2019**



[www.antec-online.de](http://www.antec-online.de)

**M8<sup>(A2)</sup>:**  
21,4 Nm  
**M8:**  
25 Nm



Mounting kit: 17W9050

**1** 17W4050.1 / 17W5050.1 **2x**

	M8x20; DIN 933 Zn	<b>6x</b>
	M8x25; DIN 933 A2	<b>6x</b>
	M8; DIN 934 Zn	<b>6x</b>
	SW 13	<b>6x</b>

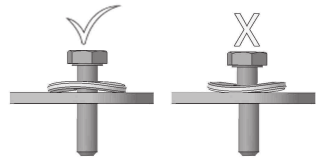
**2** 17W5032 **6x**

**3** 005497 **12x**

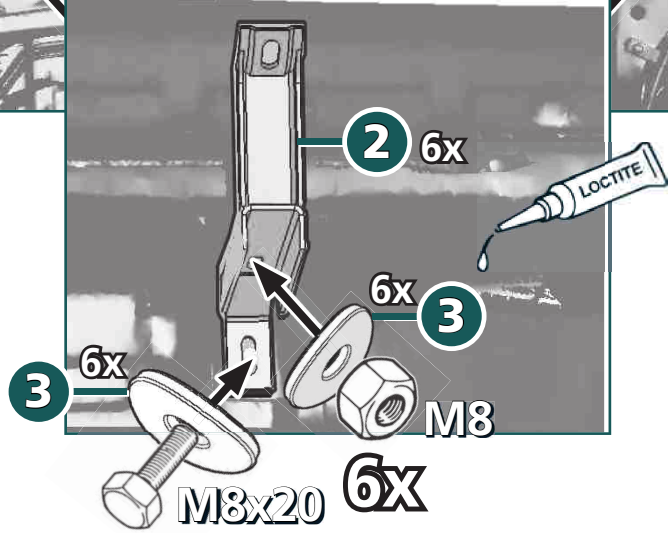
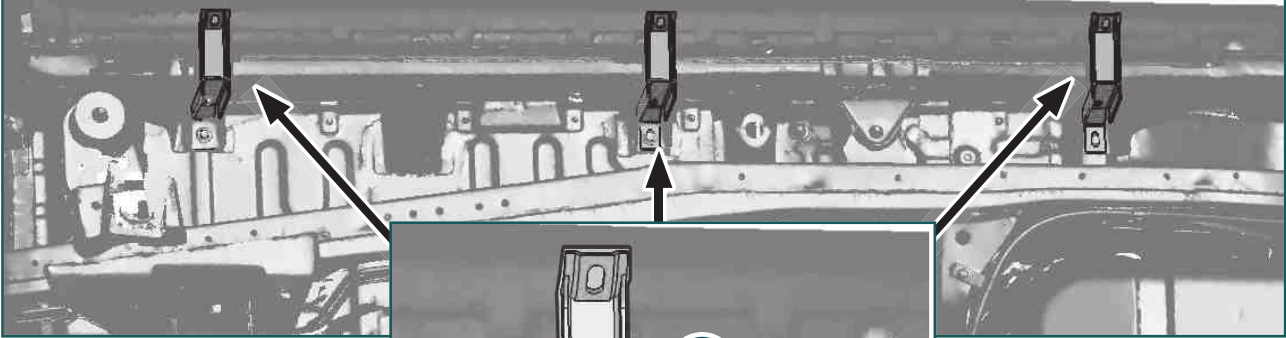
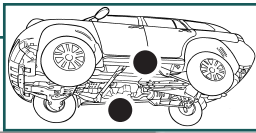
Ø9

**4** 005498 **6x**

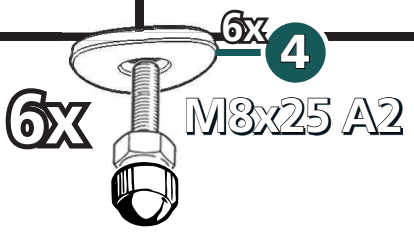
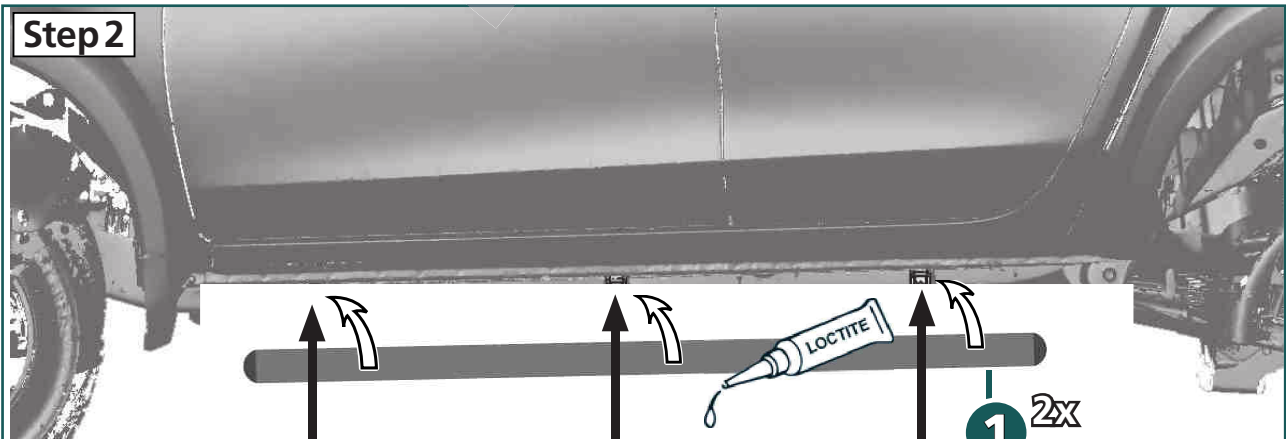
Ø9 A2



Step 1



Step 2



Step 3



M8 (A2):  
21,4 Nm  
M8:  
25 Nm

