

**17A
4151**

**Mercedes V-Klasse 05/2014
Mercedes Vito 10/2014**

wheelbase / Radstand / empattement 3200 mm

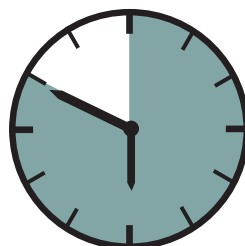
Oval side bar with dots

Flankenschutzrohr Oval mit Gumminoppen

Protections latérales ovales avec des points



ASSEMBLY INSTRUCTION
Montageanleitung • Instructions de montage



50 Minuten

article no.:

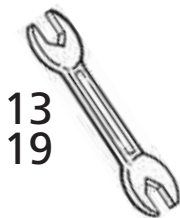
17A4151 (S) inox

17A5151 black steel

Revision 6: 22.11.2018



M8(A2): 21,4 Nm
 M12: 87 Nm



17A4151.1 / 17A5151.1
 17A4151.2 / 17A5151.2

1

2x

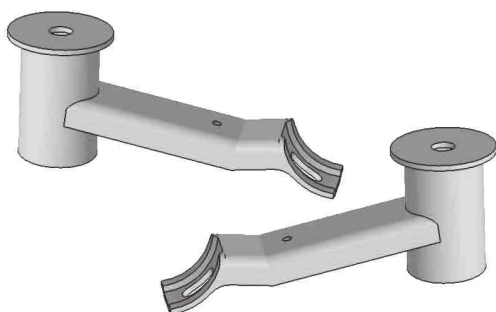


mounting kit: 17A9051

2

17A5030R / 17A5031L

2x

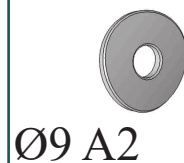


	Ø 13; DIN 125 Zn	4x
	M8 x 25; DIN 933 A2	4x
	M12; DIN 934 Zn	4x

6

005498

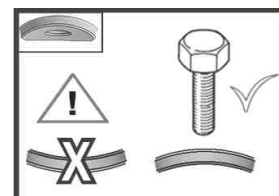
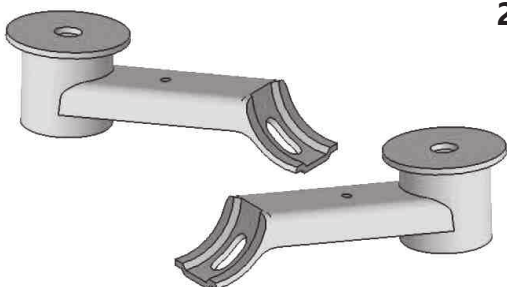
4x



3

17A5032R / 17A5033L

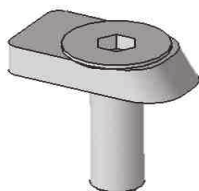
2x



4

17A5055

2x



M12 x 40

5

17A5155

2x



M12 x 70

article no.:

17A4151 (S) inox

17A5151 black steel

Revision 6: 22.11.2018



